

# Focal Point

A publication of the Sacramento Chapter  
of the California Lands Surveyors Association



November 2023

## **November 2 meeting will be at Logan's Roadhouse Speakers: Ric Moore & Dallas Sweeney from BPELSG**

Ric and Dallas will discuss the Board's online Connect system for renewals and surveyor applications

### **President's Message**

Welcome to November!

The days are getting shorter, and the year is just about over. With the quickly approaching holidays, the new year will be here before we know it. From a chapter standpoint, we have one standard meeting left and then the Holiday Party! I hope you are all able to join us at both.

We are still looking to fill our vacant Vice President/President Elect position for next year, so if this sounds like a position that you might be interested in volunteering for, please let us know.

Thank you to CSDS and Seafloor Systems for joining us last month at Vendor's night. It was great seeing you and hearing about your latest gear.

November's meeting will be our last meeting at Logan's for the year, with Ric Moore and Dallas Sweeney from BPELSG joining us.

I hope to see you there,

A handwritten signature in black ink that reads "Justin Lambert".

Justin Lambert, PLS  
2023 Sacramento Chapter President

The **Focal Point** newsletter is a publication of the Sacramento Chapter of the California Land Surveyors Association. Check us out at <https://www.sacramento-clsa.org>

### Who's Who in the Sacramento Chapter for 2023:

Justin Lambert PLS      President  
Russell Smith PLS      Vice President  
Annette Hovorka PLS      Secretary  
Adam Foster PLS      Treasurer  
Cameron Clark PLS      Board of Directors Representative  
Andrew Tapley PLS      Board of Directors Representative  
Sherry Toutges PLS      State TrigStar Coordinator  
Carl C.de Baca PLS      Editor Focal Point

## HOW TO BECOME A CORPORATE SPONSOR

If you would like to sponsor a speaker dinner, the fee is \$35 and that comes with 2 months of Business Card placement.

If you would like to sponsor a student dinner, the fee is \$25 and that comes with 1 month of Business Card placement.

The Focal Point is offering advertisements to our business partners, suppliers and other supporters with the proceeds going to our education fund.

- Business Card      \$100/year
- 1/4 page ad      \$250/year
- 1/2 page ad      \$325/year
- Full page ad      \$400/year

You can post job ads in the Focal Point for \$100 and they will run for a maximum of 1 year. And, you can take home one of our attractive slate CLSA coasters for a \$10 donation!

Contact the Focal Point editor at [focalpointeditor@gmail.com](mailto:focalpointeditor@gmail.com)

## CLSA SACRAMENTO CHAPTER CORPORATE SPONSORS



**R.E.Y. ENGINEERS, INC.**  
CIVIL ENGINEERING | LAND SURVEYING | REMOTE SENSING

Carl C. de Baca, PLS  
Principal Land Surveyor

905 Sutter Street, Suite 200, Folsom, CA 95630  
O: (916) 366 3040    D: (916) 850 8812    C: (775) 397 1553  
[cdeBaca@reyengineers.com](mailto:cdeBaca@reyengineers.com)



**Daniel Speziale**  
Sales Associate- Northern California

Leica Geosystems Inc.  
Part of Hexagon

[Daniel.speziale@leica-geosystems.com](mailto:Daniel.speziale@leica-geosystems.com)  
[www.leica-geosystems.com](http://www.leica-geosystems.com)  
**+1-831-287-4933**



Clear, Concise, Consistent

Cameron G. Clark, PLS  
[CClark@BroAndAssociates.com](mailto:CClark@BroAndAssociates.com)  
[BroAndAssociates.com](http://BroAndAssociates.com)  
916-996-0207

**Bro & Associates**  
Planning, Surveying & Design Services  
9922 Palm Grove Drive, Sacramento, CA 95827



**MICHAEL CHIARA, PLS**  
Survey Manager

**mortonpitalo**

600 Coolidge Drive, Suite 140  
Folsom, CA 95630

Phone (916) 927-2400 ext. 139  
Direct (916) 496-8758  
Fax (916) 357-7888  
[mchiara@mpengr.com](mailto:mchiara@mpengr.com)

[mpengr.com](http://mpengr.com)

CA CBE No. 1790922

**Your card here**



**R.E.Y. ENGINEERS, INC.**  
CIVIL ENGINEERING | LAND SURVEYING | REMOTE SENSING

Dan Beever, PLS  
Associate Land Surveyor

905 Sutter Street, Suite 200, Folsom, CA 95630  
O: (916) 366 3040 x159  
[dbeever@reyengineers.com](mailto:dbeever@reyengineers.com)



# CLSA Sacramento Chapter Holiday Get-Together

December 6, 2023

Ye Olde Spaghetti Factory  
1910 J Street Sacramento

Save the Date!




**GEO**  
MAPS

PHOTOGRAMMETRIC MAPPING  
ORTHOPHOTOGRAHY VOLUME SERVICES

Accuracy & Value For Every Project

[www.GeoMapsInc.com](http://www.GeoMapsInc.com)

GeoMaps, Inc 3362 Mather Field Rd Rancho Cordova, CA 95670  
916.361.9133 ph 916.361.9517 fax  
geomaps@geomapsinc.com

**The Sacramento  
Chapter of CLSA  
thanks our  
sustaining members**

- **Geomaps, LLC**
- **Cooper Aerial**

## A Christmas Story

As most of you probably did, I spent significant time last December shopping for Christmas presents for the family. I have grandkids, and one is a five-year-old boy. What the heck do you get for a five-year-old boy with a microscopic attention span and a nuclear submarine's worth of energy? I still haven't figured it out. We looked at bikes, scooters, various sporting goods, books, blocks, trucks, and lots of things that hurl projectiles, without finding the one thing that said, "I'm the one, he'll love me."

So, driving from place to place, Laurie and I found ourselves in an 'educational' toy store the week before the big day. It was one of those dimly lit, overcrowded stores full of books with morals, games with social consciousness, and the erector sets of the gods. Everything in there was designed to make a child think. I'm all for thinking, don't get me wrong. I do a lot of that sort of thing, (for all the good it does me) and I'm loath to say that thinking is not always the best option for a child. But sometimes a kid just wants to get his or her ya-yas out without pondering the greater meaning of the activity. Still, here we were at Nerdy Norm's Purposeful Play House, looking for something to hold the attention of Captain Fidget, our rambunctious grandbaby. I had to look around.

Being left-handed, I gravitated to the right side of the store, as though that meant anything, and there on a display table I spied two medium sized boxes, one with photographs of happy children, wearing white lab coats, and the other with blocks and gears and levers, made into a crane, plastered across the top. One was called Kids First Intro to Engineering and the other was Kids First Engineering Design.

Uh oh...

I looked to see what else was on the table. Exploring The Human Body, My First Nuclear Reactor, Jennie's Launch Your Own Satellite kit, Time Travel in a Box, etc, etc. WTF, I thought, as I started reaching a Lewis Black, Sam Kinison level of indignation.

*Continued on Page 5*



**Morrow  
Surveying, Inc.**  
LAND SURVEYORS



## A Christmas Story *Continued*

Where...are...the...SURVEYING...TOYS??? You know what I'm talking about:

- *Little Sammy Surveyor's First Subdivision Plat*
- *Timmy's first Township* – Cadastral Kit
- *Tommy Topo's Map That Mountain* game
- *Gaps and Overlaps* – the Surveyor's Game of Chance
- *Geoffrey's Geodesy Game*- (Satellites not included)
- *Mapping Masquerade* where the players have to deduce which one of them is actually an engineer

I couldn't find these anywhere, or anything like them. I looked, at first methodically then more frantically. There has to be something in here, I told myself. But in the end, nothing. The clerk asked me what do surveyors 'do'. Laurie had to drag me out of the store, still ranting.

Our profession, home for so many wonderful adult toys, like lasers, drones, satellite receivers, computer mapping that is almost game-like, has absolutely nothing for the little tykes. So, I came away from this experience with a resolution – let's start with a Surveying-themed board game. I'm looking for suggestions and volunteers to help work out the layout, the art work, the wonder of it all. Once we develop a board game, maybe we can build a bathtub bathymetry kit, then a low-cost LiDAR attachment for our kids' drones. Once we get started, who know where it could stop? Yeah, we need to do it because we have to find a way to recruit youth into our ranks, but really, we should want to do it because - hey, it's fun, right? Why else are we surveyors? It's not for the money...

I hope you all have a Merry Christmas!

-CRC

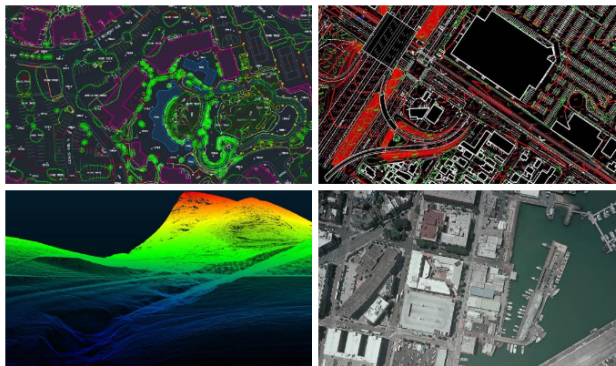
# VERTICAL MAPPING RESOURCES

a leading aerial mapping and geospatial services company

## SERVICES INCLUDE

- Photogrammetry
- Airborne LiDAR
- Mobile LiDAR post processing
- Drone data post processing
- Orthophotography

email us: [info@verticalmapping.com](mailto:info@verticalmapping.com)



[www.verticalmapping.com](http://www.verticalmapping.com)  
(775) 737-4343

# Sacramento Chapter, CLSA

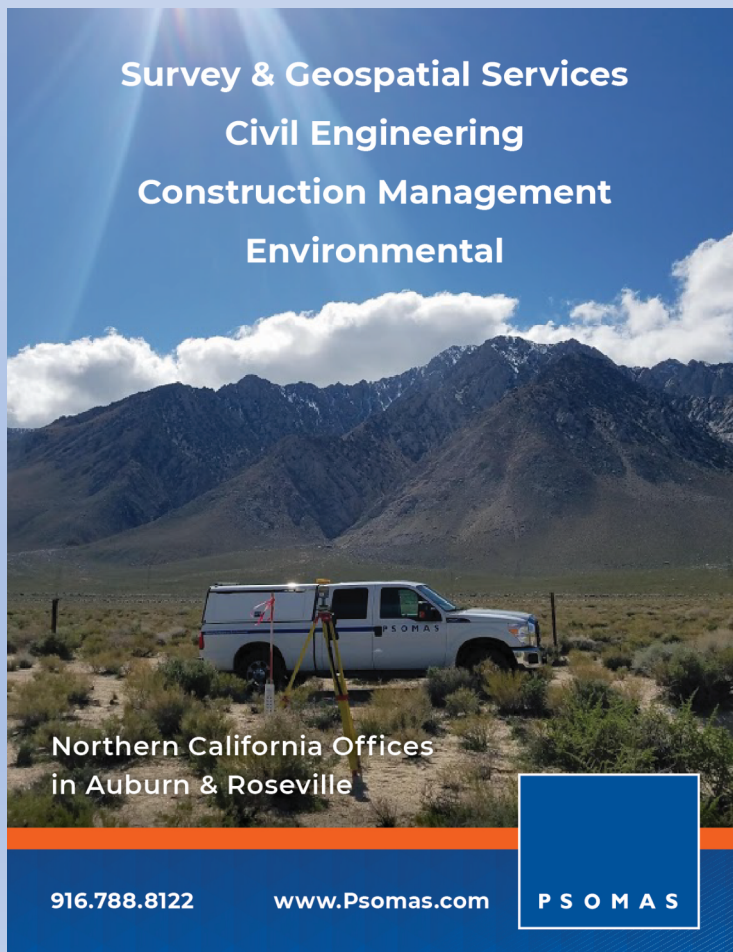
## Brief Overview of Vendors' Night meeting of October 5, 2023

Over twenty chapter members including vendors and guests met at the Federalist Public House in Matsui Alley in downtown Sacramento for pizza and fellowship. The pizza was great and the beer was cold! CSDS and Seafloor Systems showcased their equipment and absolutely no chapter business was conducted. It was glorious.

## Editor's Message

*In the spirit of the Holiday Season, there will be no Rant Zone until the new year. Have a Happy Halloween, a Happy Thanksgiving and a festive Christmas, Hanukkah, Kwanzaa season!*

-ED.



**Survey & Geospatial Services**  
**Civil Engineering**  
**Construction Management**  
**Environmental**

Northern California Offices  
in Auburn & Roseville

916.788.8122      www.Psomas.com      **PSOMAS**



**DH Technology, LLC.**  
Buy & Sell Used Geospatial  
& Surveying Gear

www.DhTechTools.com  
(916) 368-7069





# Be More Productive, Competitive, Profitable

CSDS offers the most trusted names in surveying, geospatial, 3D scanning and printing products, services, and supplies.

Our services include:

- ✓ Real-Time GNSS Network Services
- ✓ Printer Placements
- ✓ Equipment Rentals
- ✓ Technical Support and Training
- ✓ Workflow Optimization
- ✓ Professional Services



**CALIFORNIA SURVEYING & DRAFTING SUPPLY**



**We lead with service and deliver precision. Scan here to learn more.**



SACRAMENTO | DUBLIN | FRESNO | ANAHEIM | ESCONDIDO | VENTURA

solutions@cadsinc.com | 800.243.1414 | cadsinc.com