

Focal Point

A publication of the Sacramento Chapter
of the California Lands Surveyors Association



January 2024

The January 2024 meeting will be held at the Roadhouse in North Natomas on January 11!

Come join us for a round table discussion hosted by Carl C.de Baca & Michael Quartaroli on post-fire monument preservation & related topics.

President's Message

January is for looking forward and looking back. For land surveyors, that happens to be something we do every time we practice our profession. Our dependence on what has gone before is only outshined by the footsteps we leave behind.

Being a part of the collective practice compels our communication, meeting, and sharing experiences with one another. That is THE REASON we have an association. The sole reason for its existence is to give us a platform to be successful in our efforts to do our best and to provide the service our clients expect and deserve.

So, if you are in the mood to make a resolution this year, I would like to suggest that you consider making a plan to attend our meetings and functions this year as often as possible. No matter how you add to the story of our profession... new, wizened, small, large, public, private...our story is not complete without you!

I wish you the best in the coming year!

Annette Hovorka, PLS
2024 Sacramento Chapter President

The **Focal Point** newsletter is a publication of the Sacramento Chapter of the California Land Surveyors Association. Check us out at <https://www.sacramento-clsa.org>

Who's Who in the Sacramento Chapter for 2024:

Annette Hovorka PLS	President
VACANT	Vice President
Andrew Tapley PLS	Secretary
Laird Nelson	Treasurer
Cameron Clark PLS	Board of Directors Representative
Andrew Tapley PLS	Board of Directors Representative
Sherry Toutges PLS	State TrigStar Coordinator
Carl C.de Baca PLS	Editor Focal Point

HOW TO BECOME A CORPORATE SPONSOR

If you would like to sponsor a speaker dinner, the fee is \$35 and that comes with 2 months of Business Card placement.

If you would like to sponsor a student dinner, the fee is \$25 and that comes with 1 month of Business Card placement.

The Focal Point is offering advertisements to our business partners, suppliers and other supporters with the proceeds going to our education fund.

- Business Card \$100/year
- 1/4 page ad \$250/year
- 1/2 page ad \$325/year
- Full page ad \$400/year

You can post job ads in the Focal Point for \$100 and they will run for a maximum of 1 year. And, you can take home one of our attractive slate CLSA coasters for a \$10 donation!

Contact the Focal Point editor at focalpointeditor@gmail.com

CLSA SACRAMENTO CHAPTER CORPORATE SPONSORS



R.E.Y. ENGINEERS, INC.
CIVIL ENGINEERING | LAND SURVEYING | REMOTE SENSING

Carl C. de Baca, PLS
Principal Land Surveyor

905 Sutter Street, Suite 200, Folsom, CA 95630
O: (916) 366 3040 D: (916) 850 8812 C: (775) 397 1553
cdeBaca@reyengineers.com



Daniel Speziale
Sales Associate- Northern California

Leica Geosystems Inc.
Part of Hexagon

Daniel.speziale@leica-geosystems.com
www.leica-geosystems.com
+1-831-287-4933



Clear, Concise, Consistent

Cameron G. Clark, PLS
CClark@BroAndAssociates.com
BroAndAssociates.com
916-996-0207

Bro & Associates
Planning, Surveying & Design Services
9922 Palm Grove Drive, Sacramento, CA 95827



mortonpitalo

MICHAEL CHIARA, PLS
Survey Manager

600 Coolidge Drive, Suite 140
Folsom, CA 95630

Phone (916) 927-2400 ext. 139
Direct (916) 496-8758
Fax (916) 357-7888
mchiara@mpengr.com

mpengr.com

CA CBE No. 1790922

Your card here



R.E.Y. ENGINEERS, INC.
CIVIL ENGINEERING | LAND SURVEYING | REMOTE SENSING

Dan Beever, PLS
Associate Land Surveyor

905 Sutter Street, Suite 200, Folsom, CA 95630
O: (916) 366 3040 x159
dbeever@reyengineers.com

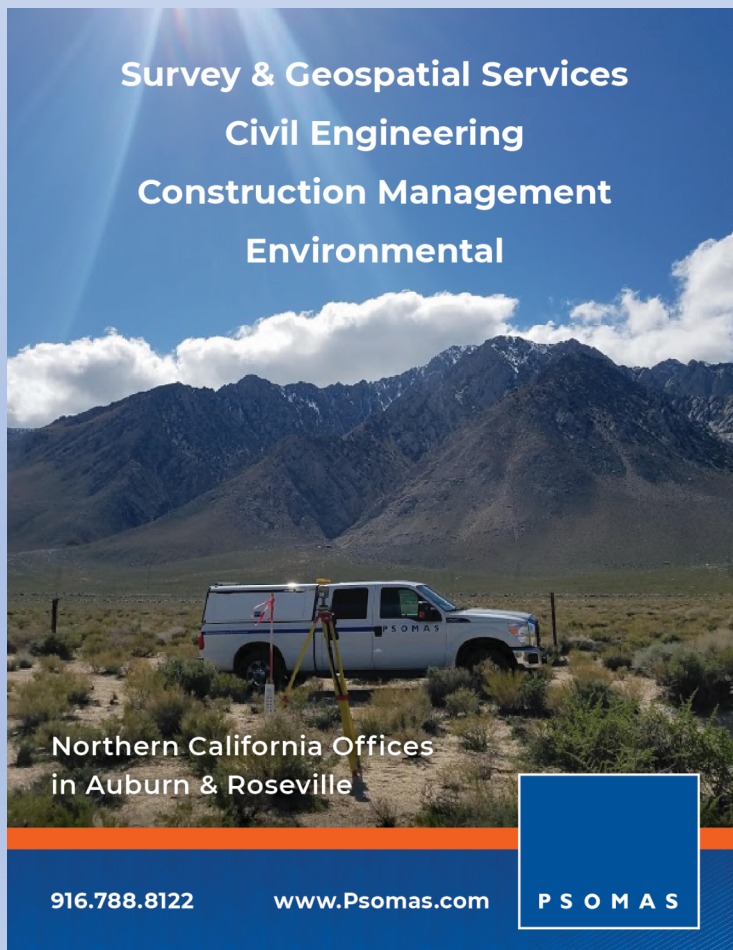
Editor's Message

The Holidays are over and we are starting a brand new year. One thing is for sure, there are plenty of unresolved issues surrounding the profession of Land Surveying to keep us engaged. Did anyone log in to the sad excuse for a town hall meeting that NSPS put on in early December? The topic was the NCEES Model Law, and the proposed changes thereto that they are putting forth without having developed the changes through committee work. Hmmm.

And, regarding Monument Preservation, I encourage everyone to read the David B. Zilkoski piece entitled "The Importance of Saving Passive Survey Marks". It was originally published in GPS World and can be seen in the latest NSPS News and Views e-bulletin. Given California's long years of experience with wildfire-related monument loss, and Hawaii's recent conflagration, clean up and rebuilding efforts in Lahaina, I would like to think that NSPS would lead an effort to secure congressional funding for monument preservation. The post-disaster clean up process, anywhere in the US should contain a funded monument preservation element. Hey CLSA board, bring this suggestion to the next NSPS meeting, please... in the form of a motion, please!

And lest we forget, what about my favorite topic, the increasing shortage of professional surveyors? Is this shortage real? Could it be the reason so many surveyors in the region have moonlighting gigs? Read this month's Rant Zone and think of a reply.

-ED.



Survey & Geospatial Services
Civil Engineering
Construction Management
Environmental

Northern California Offices
in Auburn & Roseville

916.788.8122 www.Psomas.com **PSOMAS**



DH Technology, LLC.

Buy & Sell Used Geospatial
& Surveying Gear

www.DhTechTools.com
(916) 368-7069

THE RANT ZONE

As professional surveyors, we have achieved, through education and experience, a highly respected status. We maintain superior standards and we care about every aspect of our job. We are held accountable for our actions, our decisions and our very demeanor. We have a code of ethics and a commitment to continuous improvement. Don't believe any of the foregoing? Google 'professional' and see what comes up.

If we are employed by a firm, a utility company or an agency, whether local or state, we are a representative of that firm, company or agency and we are expected to use our professional status and skills to maintain the good standing of those whom we represent. Is that not a full-time commitment? How does one function as a professional land surveyor all day, five days a week for an employer and still have time to take on side work? Am I the only one who stewes over extensive research and difficult boundary determinations after the workday is done? How do you find time to cogitate over challenging day-job problems, whilst engaging in side work?

Where am I going with this? Put bluntly, I don't think moonlighters are giving their employers 100% of their attention or time, (especially if they are 'working remotely'), and I assert that this is unprofessional. Does it make me unpopular for saying this out loud? Probably. But I can live with that. So, Moonlighter, let me ask some simple questions:

1. Have you registered your one-person firm with the secretary of state?
2. Do you have a business license?
3. Are you paying state and federal taxes on your side income?
4. Are you carrying liability and errors & omissions insurance?
5. Do you have your own survey equipment?
6. Is that equipment getting the servicing and calibration it needs?
7. Do you own your own survey and cadd software?
8. Do your rates account for overhead and expenses, making them consistent with the rates a professional relying on education, experience and fixed costs would charge? Or are you just trying to match your day-job salary?
9. Do you operate a place of business that clients and prospective clients can visit during normal business hours?

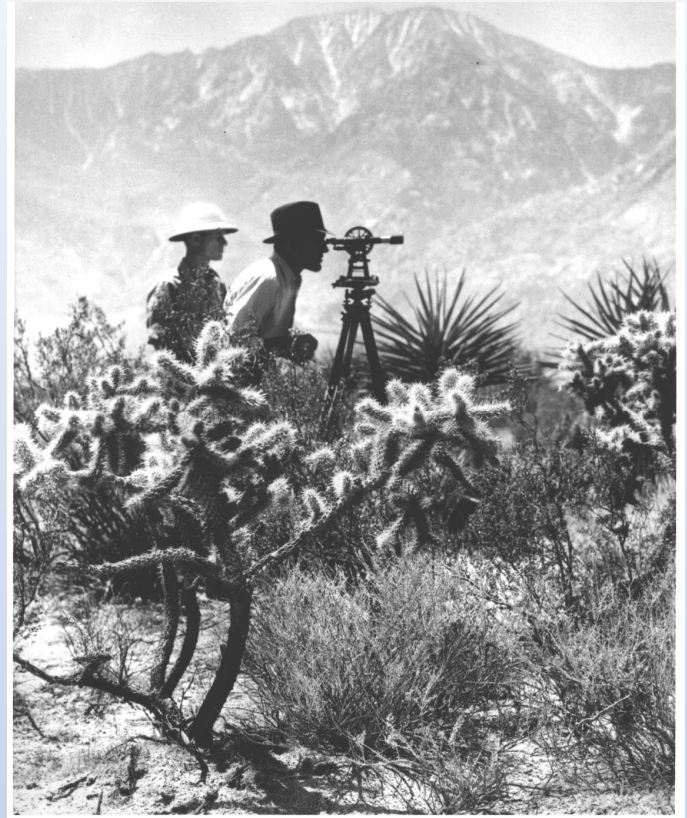
Unless you can answer yes to each one of these questions, then how can you say you are meeting the high standards of the profession? And if you can answer yes to all these questions yet you have a 'first forty hours' commitment to an employer, I have to ask why you don't just quit and run your business full time? And by the way, when you need to visit a local agency or take a phone call on behalf of your side-work client's project, do you take time off from your primary employer, or do you just kind of fit it in?

I confess to being curious whether anyone out there wants to take a stab at arguing in favor of moonlighting. By the way, do you see a lot of doctors and lawyers moonlighting?



Morrow
Surveying, Inc.
LAND SURVEYORS

PHOTO OF THE MONTH



Thanks to Ruel Del Castillo of Coast Surveying, Inc for these vintage photos of surveying for the Colorado River Aqueduct!

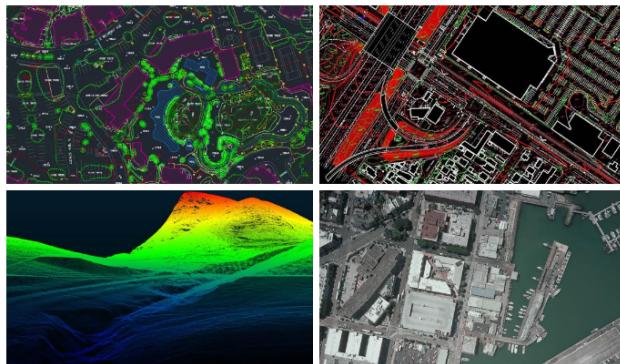
VERTICAL MAPPING RESOURCES

a leading aerial mapping and geospatial services company

SERVICES INCLUDE

- Photogrammetry
- Airborne LiDAR
- Mobile LiDAR post processing
- Drone data post processing
- Orthophotography

email us: info@verticalmapping.com



www.verticalmapping.com
(775) 737-4343

WESTERN REGIONAL SURVEY CONFERENCE

SADDLE UP FOR KNOWLEDGE

MAPPING THE LAND SURVEYING FRONTIER

MARCH 23-26, 2024

**HORSESHOE HOTEL AND CASINO
LAS VEGAS, NV**

WESTERN FEDERATION OF PROFESSIONAL SURVEYORS
WFPS

Question: Is anyone else out there having difficulty downloading PDFs of Township Plats from the BLM website? The interface seems to have broken sometime in mid-2023.

GEOMAPS

PHOTOGRAMMETRIC MAPPING
ORTHOPHOTOGRAHY VOLUME SERVICES

Accuracy & Value For Every Project

www.GeoMapsInc.com

GeoMaps, Inc 3362 Mather Field Rd Rancho Cordova, CA 95670
916.361.9133 ph 916.361.9517 fax
geomaps@geomapsinc.com

The Sacramento Chapter of CLSA thanks our sustaining members

- Geomaps, LLC
- Cooper Aerial



Be More Productive, Competitive, Profitable

CSDS offers the most trusted names in surveying, geospatial, 3D scanning and printing products, services, and supplies.

Our services include:

- ✓ Real-Time GNSS Network Services
- ✓ Printer Placements
- ✓ Equipment Rentals
- ✓ Technical Support and Training
- ✓ Workflow Optimization
- ✓ Professional Services



CALIFORNIA SURVEYING & DRAFTING SUPPLY



We lead with service and deliver precision. Scan here to learn more.



SACRAMENTO | DUBLIN | FRESNO | ANAHEIM | ESCONDIDO | VENTURA

solutions@cadsinc.com | 800.243.1414 | cadsinc.com