

Focal Point

A publication of the Sacramento Chapter
of the California Lands Surveyors Association



March 2025

**The next Chapter meeting will be held on
Thursday, March 6th, 2025**

**Come join us at Riley's on Sutter, 702 Sutter Street in
Folsom, CA. Dallas Sweeney, PLS of the California
Board of Engineers, Land Surveyors and Geologists
discusses a variety of relevant topics!**

President's Message

**Annette Hovorka, PLS
2025 Sacramento Chapter President**

The Role of Preparation in Leveraging Luck in Land Surveying

In our profession, you must admit we depend on luck for a great deal. Many of us find ourselves involved in the profession because of an unplanned happenstance. However, once here, how far can luck take us? I am afraid not far without preparation and readiness to take advantage of any opportunity.

Preparation begins with a solid foundation of knowledge and skills. Once technical basics are mastered, continued education by staying updated with the latest technological advancements and regulatory changes is crucial. Continuous professional development through courses, certifications, and field practice ensures that remaining available for taking advantage of chance.

Learning technical items is not enough. Relationships with stakeholders, including clients, local authorities, and fellow professionals, can be a game-changer. Effective relationship building can also lead to unexpected opportunities, such as collaborations on large projects or insider tips on upcoming developments. These connections often serve as the "luck" that a well-prepared surveyor can seize.

(Continued on page 3)

The **Focal Point** newsletter is a publication of the Sacramento Chapter of the California Land Surveyors Association. Check us out at <https://www.sacramento-clsa.org>

Who's Who in the Sacramento Chapter for 2025:

Annette Hovorka PLS	President	Andrew Tapley PLS	Board of Directors Representative
Morgan Thalken PLS	Vice President	Carl C.de Baca PLS	Board of Directors Rep. <i>Alternate</i>
Carl C.de Baca PLS	Secretary	Sherry Toutges PLS	State TrigStar Coordinator
Laird Nelson LSIT	Treasurer	Carl C.de Baca PLS	Editor Focal Point

HOW TO BECOME A CORPORATE SPONSOR

If you would like to sponsor a speaker dinner, the fee is \$35 and that comes with 2 months of Business Card placement.

If you would like to sponsor a student dinner, the fee is \$25 and that comes with 1 month of Business Card placement.

The Focal Point is offering advertisements to our business partners, suppliers and other supporters with the proceeds going to our education fund.

- Business Card \$100/year
- 1/4 page ad \$250/year
- 1/2 page ad \$325/year
- Full page ad \$400/year

You can post job ads in the Focal Point for \$100 and they will run for a maximum of 1 year. And, you can take home one of our attractive slate CLSA coasters for a \$10 donation!

Contact the Focal Point editor at alidade.nv@sbcglobal.net


CLSA SACRAMENTO CHAPTER CORPORATE SPONSORS



R.E.Y. ENGINEERS, INC.
CIVIL ENGINEERING | LAND SURVEYING | REMOTE SENSING

Dan Beever, PLS
Associate Land Surveyor

905 Sutter Street, Suite 200, Folsom, CA 95630
O: (916) 366 3040 x159
dbeever@reyengineers.com



LAUGENOUR AND MEIKLE
608 Court Street, Woodland, California 95695
P.O. Box 828, Woodland, California 95776
CIVIL ENGINEERING, LAND SURVEYING AND PLANNING
Established 1953

(530) 662-1755 Ext. 220
(530) 312-0571 CELL
matt@lmce.net

Matthew K. Souza
Principal Surveyor
P.L.S. 9215



MICHAEL CHIARA, PLS
Survey Manager

600 Coolidge Drive, Suite 140
Folsom, CA 95630
Phone (916) 927-2400 ext. 139
Direct (916) 496-8758
Fax (916) 357-7888
mchiara@mpengr.com

mpengr.com
CA CBE No. 1790922



REESE Water & Land SURVEYING SERVICES

ROBERT J. REESE
Owner • PLS 6208
robert@reesesurveying.com

900 Los Osos Valley Road, Suite B
Los Osos, CA 93402
Tel/Fax: 805.439.2741



R.E.Y. ENGINEERS, INC.
CIVIL ENGINEERING | LAND SURVEYING | REMOTE SENSING

Carl C. de Baca, PLS
Principal Land Surveyor

905 Sutter Street, Suite 200, Folsom, CA 95630
O: (916) 366 3040 D: (916) 850 8812 C: (775) 397 1553
cdeBaca@reyengineers.com

President's Message

Continued from page 1

With an extraordinary stroke of luck, an easy way to accomplish all these things is to participate in the activities of our chapter. Each month brings us an opportunity to increase our knowledge as well as improve our relationships. In addition, there are conferences, webinars, picnics, and night golf. All of them give us the chance to leap toward the lucky circumstances that come our way.

I will consider myself lucky if our chapter thrives. Our executive team works cooperatively to help make the opportunities available. However, we need you too. Your participation and assistance would greatly improve all of our chances of success. You would be surprised how even the smallest act by you can thin the line between luck and preparation.

Annette Hovorka, PLS
2025 Sacramento Chapter President

Editor's Message

2025 should be an exciting and productive year for the Sacramento Chapter of CLSA. We have an engaged group of officers, a solid slate of speakers for the first half of the year, and a strong list of to-do items. With the meetings moving around a bit this year, there should be more opportunities for you to attend a meeting (and less excuses not to...).

As always, this editor encourages you, the readers, to contribute ideas, opinions and editorials to this fine newsletter.

-ED

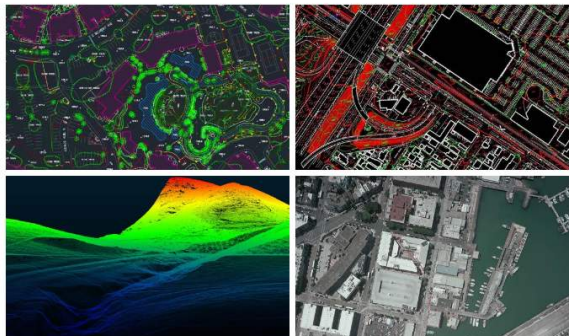
VERTICAL MAPPING RESOURCES

a leading aerial mapping and geospatial services company

SERVICES INCLUDE

- Photogrammetry
- Airborne LiDAR
- Mobile LiDAR post processing
- Drone data post processing
- Orthophotography

email us: info@verticalmapping.com



www.verticalmapping.com
(775) 737-4343

Sacramento Chapter, CLSA

Minutes for meeting of February 6, 2024

The meeting of February 6th, 2025 was held at Logans Roadhouse in Natomas and called to order by Secretary Carl C.de Baca at 6:15 PM.

In attendance: Dan Beever, Scott Bryant, Curt Burfield, Jimmy Byrum, Carl C.de Baca, Sean Davis, Adam Foster, Brian Gilooly, Madison Gruginski, Adrian Robinson, Jonathan Rohrs, Andrew Tapley, and Jim White.

President's Report: (No Report)

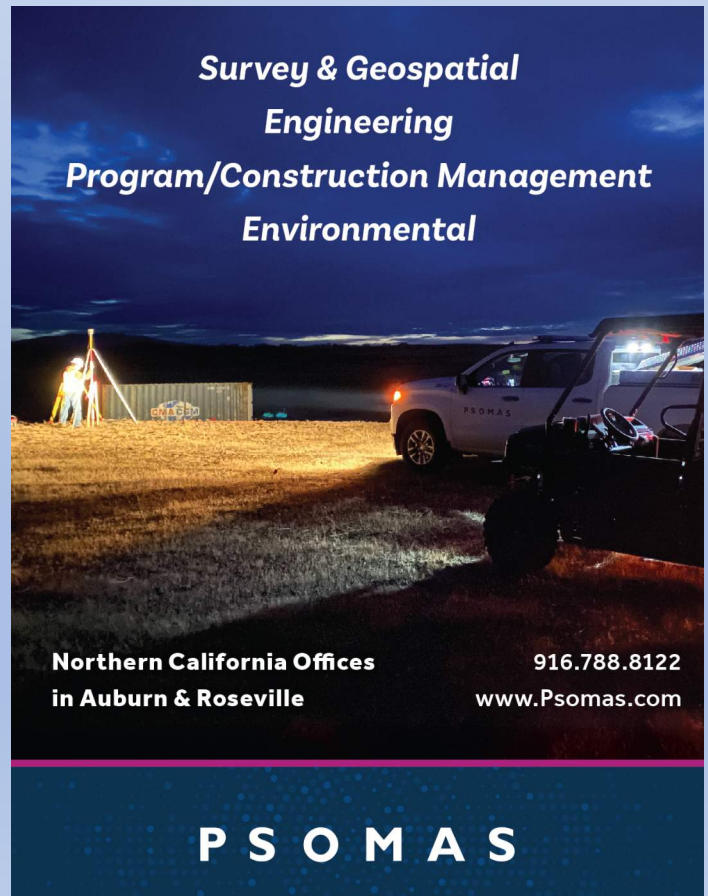
Vice President's Report (Report given by Secretary):

1. We will be moving the meetings around a bit in 2025. The March meeting will be in Folsom at Riley's on Sutter.
2. We have the next few speakers lined up including Title professionals Dan and Shelli Moreno who operate a title consulting business, BPELSG surveyor Dallas Sweeney and Brian Frazier and Justin Cisneros from the El Dorado County Surveyors Office. We are looking for suggestions for speakers for the second half of the year.
3. We need to get the date and location of the summer picnic established. Jonathan Rohrs has volunteered to lead that effort.

(Continued on page 5)

Upcoming Speakers

March	Dallas Sweeney of BPELSG variety of topics
April	Dan & Shelli Moreno of Finish Line – Title Services and the L.S.
May	We are targeting May for the Chapter Summer Picnic – stay tuned for details!
June	Brian Frazier & Justin Cisneros m El Dorado County



**Survey & Geospatial
Engineering
Program/Construction Management
Environmental**

**Northern California Offices
in Auburn & Roseville**

**916.788.8122
www.Psomas.com**

PSOMAS

Chapter Meeting Minutes

(Continued from Page 4)

Secretary's Report (Carl C.de Baca):

1. Ad hoc committee has been looking into reestablishing the local Professional Practices Committee (PPC). In so doing we should probably update our guidelines and extend an offer to the Gold County Chapter to be part of it.
2. Sacramento County Surveyor Jon Scarpa held a three hour round table meeting at his offices on Thursday, January 30, 2025. Along with discussion regarding new LSA Act provision 8771.6 there was much discussion of the cost and elapsed time of reviews of Records of Survey. A request from Scarpa will be part of the new business discussed at this meeting.
3. Your secretary attended the recent CLSA Board of Directors Meeting, which was held in Sacramento at the Hyatt Place hotel on February 1, 2025. I defer to our chapter reps to give a report to the chapter.

Treasurer's Report (Laird Nelson absent – report given by Adam Foster):

1. We currently have \$6891 in our account. Scholarships have been funded. A motion was made to fund two students to the upcoming CLSA/NALS conference and to donate door prizes for a total not to exceed \$1000. Motion was seconded and carried.

CLSA Board of Directors Report (Curt Burfield w/ Andrew Tapley):

1. Curt and Andrew attended the meeting and gave a verbal report.
(*highlights are following the meeting minutes on page 8 herein*)

New Business (in lieu of a speaker at the meeting, several new business items were discussed):

1. It is time to settle on the date and location for the 2025 Summer picnic. Johnson-Springview Park in Rocklin was discussed as a good location. Jonathan Rohrs, who had previously volunteered to head up the Survey Olympics activities at the picnic, was assigned the task of finding and securing a date for the event – hopefully in May.
2. Should the chapter reestablish a PPC, and if so, should it revisit the guidelines? No decision was made at the meeting.
3. Dallas Sweeney of the Board of Professional Engineers, Land Surveyors and Geologists, who is slated to speak to the chapter later in the Spring, has requested the chapter's input for his discussion topics.

(Continued on page 6)

2025 National Surveyors Week

March 16-22

nsp.us.com

Global Surveyors' Day

March 21

#NSW

#NationalSurveyorsWeek




Chapter Meeting Minutes

(Continued from Page 5)

4. A request has come to the chapter from Jon Scarpa, Sacramento County Surveyor. Previously, the chapter had composed and sent a letter to the Sacramento Co. Board of Supervisors supporting moving Record of Survey review to the general fund and making the review a flat fee. Of the 7 surrounding counties studied by Sac Co. they are the only one with a cost-recovery basis for the review fee. Unfortunately, the letter we sent did not accomplish anything. Scarpa would like us to revisit this cause by doing the following things:

- Exhume the letter and polish it so that it is more direct and throws out a few facts – perhaps suggest what the flat fee should be.
- Send the revised letter, not only to the Board of Supervisors, but also to the individual board members and most importantly, to the County chief executive and the chief engineer. Scarpa can provide those addressees.
- Provide the letter as a template, to everyone who attended the County round table meeting, so they can adopt as their own and assist in the letter writing campaign.
- Request an opportunity to speak to the board of supervisors on this topic at a board meeting. Show up in a group when we do.
- Consider making common cause with the local ACEC chapter on this topic, which will get more attention with the big multi-discipline firms.



GEOMAPS

PHOTOGRAMMETRIC MAPPING
ORTHOPHOTOGRAPHY VOLUME SERVICES

Accuracy & Value For Every Project

www.GeoMapsInc.com

GeoMaps, Inc 916.361.9133 ph
3362 Mather Field Rd 916.361.9517 fax
Rancho Cordova, CA 95670 geomaps@geomapsinc.com



DH Technology, LLC.

Buy & Sell Used Geospatial
& Surveying Gear

www.DhTechTools.com
(916) 368-7069

This topic engendered much discussion among the attendees. It was noted that Scarpa asks our chapter for help periodically but does not attend many meetings or participate in local chapter business in any meaningful way. It was also pointed out that our chapter may not carry enough clout to affect any sort of meaningful dialog or change with the targeted group of individuals. Two members of the staff of the Sacramento county Surveyors office were in attendance and a request was given to them to see if they can provide some statistics back to the chapter regarding how many sheets the average Record of Survey is, how long the reviews take on average, and if possible, what the average cost of a review has been, over the past year or two. This information will make it easier for the chapter to determine a strategy and possibly craft the updated letter.

See B.O.D. summary on page 8)



DISASTER RELIEF FUND

In the past few years we have seen several horrendous wildfires in California. Santa Rosa, Paradise, Grizzly flats – those are just some of the places that have been devastated by wildfire. But we have never seen anything like what has just happened in and around Los Angeles.

As these communities begin the long road to recovery from this conflagration, it is important to point out that many surveyors have no doubt had their homes or businesses destroyed and they need our help.

Please consider donating to the NSPS Disaster Relief Fund. The funds go to surveyors and their families as they try to sustain their businesses and rebuild their lives.

THE NSPS FOUNDATION DISASTER RELIEF FUND HELPS THOSE IN NEED AND EVERY PENNY YOU DONATE GOES TO THOSE THAT HAVE BEEN AFFECTED.

PLEASE CONSIDER MAKING A DONATION TODAY!

Donations of any amount are being accepted to the fund as we try to build it back-up after disbursements are made. You can donate online or make checks payable to the NSPS Foundation and write Disaster Relief Fund In the memo field. Mail to:

NSPSF DR Fund. 21 Byte Court, Suite H, Frederick, MD 21702

Thank you in advance for your support of the Foundation and your fellow surveyors.

<https://www.nsp.us.com/page/DisasterRelief> Questions: Email
us - info@nsp.us.com

Highlights from February 1, 2025 CLSA Board of Directors Meeting

- CLSA ended 2024 with a \$10K profit – finances are headed in the right direction.
- Kimi Shigetami is the new Executive for CLSA. She replaces Kim Oreno who left in October. Kimi started on December 2 and has previous association management experience.
- New officers were installed for 2025. Joe Padilla President / Kristie Achee President Elect / Michael Pulley Secretary/ Kathy Nitayangkul Treasurer / Two members at large were appointed to the Excom (Dave Wooley & George Marachenko)
- Education Foundation – Keith Spencer. 58 applications for scholarships – 36 scholarships given for a total of \$48K in 2025.
- Conference Committee – Steve Martin notes that **a preliminary program has been released**. He also points out that chapters need to make their donation for student attendees and also **chapters should consider donating door prizes for the conference**.
- Per the Oregon Survey Education Liaison Michael Pulley– OIT is now being taught entirely by adjunct instructors since the retired professors have not been replaced. The program is now under the Mathematics division and is considered a “sub-degree” at this point. OSU is looking at establishing a BS degree for Geomatics supplemental to their Civil Engineering program.
- The Surveyor Coalition Liaison David Wooley reported that the Coalition is looking at how to mandate that any field crew working on a public project in California shall have two LSIT’s on the field crew and that replacement crews or crew members would need to be requested in writing.
- The Surveyor Coalition also wants to exclude statewide, any remote workers, not living in the state of California from working on public projects. This is being referred to as the “Buy California” initiative.
- WFPS delegate Kevin Nehring – he noted that WFPS is interested in the events surrounding the “dismantling” of the Orange County Surveyors office and has offered their support to CLSA for any campaign the group might take up in an effort to restore the office.
- CalTrans Liaison Rob McMillan – The BPELSG has been processing complaints about engineers stamping plan sets that contain geodetic coordinates. (This activity must be overseen and stamped by a PLS)

CLSA/NALS REGIONAL SURVEY CONFERENCE 2025

Traversing New Peaks: Ain't No Mountain High Enough

March 29 – April 1

SILVER LEGACY, RENO, NV

INFO AT: PLSEEDUCATION.ORG



The Rant Zone

By Lee Ving

FireAid? Seriously, FireAid? Where were the celebrities when Lahaina burned? Where were they when Santa Rosa or Paradise burned? “Oh well, gosh, we didn’t know...” But threaten to burn down Hollywood and they come out of the woodwork like cockroaches bearing gifts. At least they didn’t come up with some horrible mass recording like “Do They Know It’s Christmas?”, or did they? I don’t care.

The surveying community needs its own version of Fire Aid to raise money for monument recovery. There are a lot of California surveyors with musical skills. I’ll bet we could get them all together for a benefit show and raise... about seventy five bucks. (It’s the thought that counts.)

On a more serious note, will the endangered monuments be recovered and perpetuated before the clean-up wipes them out? Did the recent flood and mudslides make things more complicated? Who is leading efforts down there – anyone? There was a noticeable lack of enthusiasm to discuss the events in Los Angeles during the recent BOD meeting in Sacramento. It was essentially tabled until the next quarterly meeting. Recovery of monuments after such a horrendous series of fires sure seems like something that CLSA should be up to their necks in; taking a leadership role in, but what do I know?

If you are concerned with the surveyors whose homes burned or whose businesses burned, you can donate to the NSPS Disaster Relief Fund. The NSPS Foundation oversees the fund and doles out grants to all land Surveyors who apply for assistance. The Fund, never really flush, even in the best of times, needs your help more than ever, right now. It’s a 501C3 charitable contribution and helps fellow surveyors. That’s the kind of Fire Aid I can get behind.

NSPS CST
CERTIFIED SURVEY TECHNICIAN

CONFIDENCE Certified.
NSPS CST CERTIFIED SURVEY TECHNICIAN

EMPLOYERS
LEARN THE VALUE
CST Certification verifies one's capabilities and value, enhancing employers' credibility with current and potential clients.
[GET DETAILS](#)

ABOUT
GET THE INFO
Four levels of certification are offered in two primary tracks - field and office. Certification is by examination, which must be monitored by an approved Proctor.
[LEARN MORE](#)

APPLICANTS
START THE PROGRAM
Begin your path to higher standing with employers and a more satisfying career, as well as higher income.
[GET DETAILS](#)

cstnps.com

NSPS

GEOSPATIAL TECHNOLOGY
AeroTech Mapping Equipped With Cutting Edge Tools

2 - Cessna 206
Turbo Charged

Vexcel Ultracam
Falcon Mark II Digital Camera

Lidar Sensor
Teledyne Optec CM2000

Seafloor Hydrone
Bathymetric Boat

DJI Matrice 300 RTK
LiDAR Sensor Thermal Sensor

Mobile LiDAR Scanner
ROCK R360

AutoDesk Software
Autocad Civil 3D 2022

Microstation Software
Modeling, Documentation, Visualization Software

Trimble Inpho Software
Datum Stereoplottter

Your Geospatial Partner Since 2002

- Aerial Imagery Acquisition
- Digital Terrain Modeling
- Topographic Mapping
- Planimetric Mapping
- Orthophotography
- Aerial & Mobile LiDAR Acquisition
- LiDAR Classification & Modeling
- Thermal Imaging
- Volumetric Calculations
- Bathymetry Acquisition Modeling

Servicing A/E/C Sectors
Land Development, Transportation, Hydrology, Mining, Forestry, Coastal Studies, Homeland Security, Airport Infrastructure, and Energy (Solar/Wind)

Arizona | California | Nevada | New Mexico | Texas | Utah
atmlv.com

Joey Desjardins
E: JoeyDesjardins@atmlv.com | C: 949-351-6167



Contact us to learn more

PRECISION MEETS PRODUCTIVITY

Bundle as low as \$24,900*

Find out why JAVAD represents the pinnacle of reliable GNSS land survey technology.

- Patented RTPK
- 4 Super Engine RTK - never get a bad fix again
- Remote control and monitoring
- All-in-one solution with UHF / Cell connectivity
- Powered by custom JAVAD ASIC
- Made in the USA

TRIUMPH-LS Plus

All-in-one rover



TRIUMPH-3

Simple and powerful base

*Contact us for full pricing details

www.javad.com | sales@javad.com



Be More Productive, Competitive, Profitable

CSDS offers the most trusted names in surveying, geospatial, 3D scanning and printing products, services, and supplies.

Our services include:

- ✓ Real-Time GNSS Network Services
- ✓ Printer Placements
- ✓ Equipment Rentals
- ✓ Technical Support and Training
- ✓ Workflow Optimization
- ✓ Professional Services



CALIFORNIA SURVEYING & DRAFTING SUPPLY



We lead with service and deliver precision. Scan here to learn more.



SACRAMENTO | DUBLIN | FRESNO | ANAHEIM | ESCONDIDO | VENTURA

solutions@cadsinc.com | 800.243.1414 | cadsinc.com