

FOCAL POINT

CLSA Sacramento Chapter Newsletter



Next Meeting

THURSDAY, NOVEMBER 4

AT 6:00 PM

LOGAN'S ROADHOUSE

3698 N FREEWAY BLVD.

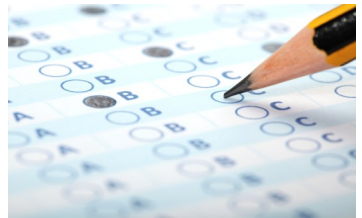
SACRAMENTO, CA 95834

“Gratitude makes sense of the past, bring peace for today, and a vision for tomorrow.”

Melody Beattie

LS Exam Prep Class

The chapter's Exam preparation class will be starting at the beginning of next year. Please spread the word and have potential students contact class facilitator Russ Smith at













HOW TO PLAY:

* PLACE A PARTY CHIEF ORTHOGONALLY ADJACENT TO EACH INSTRUMENT, SUCH THAT THE NUMBER OF PARTY CHIEFS IN EACH ROW AND COLUMN EQUALS THE NUMBER SHOWN FOR EACH ROW AND COLUMN.

* PARTY CHIEFS CANNOT BE ADJACENT TO ONE ANOTHER, INCLUDING DIAGONALLY



| | | | | | |
|---|---|---|---|---|--|
| | | | | | |
|  | | |  |  | |
| |  | |  | | |
|  | | | | | |
| | | | | | |
|  | |  | | | |
| | | |  |  | |

2

1

2

0

2

1

2

4

0

3

0

3



Seafloor™

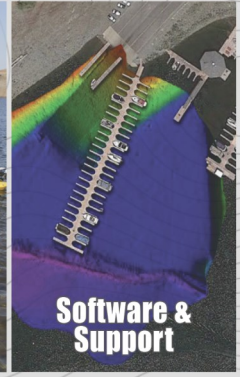
Total survey solutions from hydrographers, for hydrographers.



Hydrographic Instruments



Unmanned Survey Vessels



Software & Support

www.seafloorsystems.com

+1(530) 677-1019

info@seafloorsystems.com

SOLUTION

| | | | | | |
|---|---|---|---|---|---|
| | | | | | 2 |
| | | | | | 1 |
| | | | | | 2 |
| | | | | | 0 |
| | | | | | 2 |
| | | | | | 1 |
| | | | | | 2 |
| 4 | 0 | 3 | 0 | 3 | |

GROMATICI LAND SURVEYING FINDS KEY TO EFFICIENCY

How much impact does technology really have on the surveying profession?

Gromatici Land Surveying, based in Santa Barbara, uses a drone for aerial mapping and topographic surveys and a Leica Nova MultiStation for the flexibility of having a high-speed, high-performance robot with laser scanning capabilities. Recently, the firm invested in another key piece of technology—a Leica GS18 I GNSS smart antenna with visual positioning. “The GS18 I is an innovative GPS unit that I saw right away would be a really big time saver,” Ackerman says.

With the imaging capabilities of the GS18 I, the firm’s surveyors can quickly and easily capture details like utility boxes and trees as they’re walking. For landscape surveys, they can capture rock walls and other features. And having all the data in the images significantly streamlines QA/QC both in the field and in the office.

Gromatici has also found a niche using both their GS18 I and drone to quickly capture comprehensive ground-level and aerial data and imagery, combining the data in Leica Infinity office software. The approach saves time and generates impressive deliverables.

“When future surveyors see Gromatici on a tag, they’ll know it’s quality work and they can trust what they’re retracing,” Ackerman says. “But the service aspect is also key. As a small business, we’re able to provide big business customer service. That’s extremely gratifying.”

Read the full story at <https://hxgn.biz/gromatici>

To learn more about solutions to maximize your surveying potential, get in touch with a surveying and engineering expert at Leica Geosystems.

