

# Focal Point

A publication of the Sacramento Chapter  
of the California Lands Surveyors Association



February 2024

**The February 2024 meeting will be held at the  
Roadhouse in North Natomas on February 8th!**

**Come join us for Chapter President Annette Hovorka,  
PLS discussing Team Building and Staff Retention.**

The Preliminary Program for the upcoming conference is available at:  
<http://www.plseducation.org/PDFs/2024%20Preliminary%20Program.pdf>

**WESTERN REGIONAL SURVEY CONFERENCE**  
**SADDLE UP FOR KNOWLEDGE**  
**MAPPING THE LAND SURVEYING FRONTIER**  
**MARCH 23-26, 2024**  
**HORSESHOE HOTEL  
AND CASINO  
LAS VEGAS, NV**

The banner features a stylized illustration of a surveyor in a hat and backpack, holding a surveying instrument, standing in a desert landscape with a city skyline in the background. The text is prominently displayed in various colors and fonts. At the bottom, there are logos for the American Professional Land Surveyors (APLS), California Land Surveyors Association, Nevada Association of Land Surveyors, New Mexico Professional Land Surveyors, and Wyoming Professional Land Surveyors, along with the Western Federation of Professional Surveyors (WFPS) logo.

The **Focal Point** newsletter is a publication of the Sacramento Chapter of the California Land Surveyors Association. Check us out at <https://www.sacramento-clsa.org>

### Who's Who in the Sacramento Chapter for 2024:

Annette Hovorka PLS President  
Kris Scott Vice President  
Andrew Tapley PLS Secretary  
Laird Nelson Treasurer  
Cameron Clark PLS Board of Directors Representative  
Andrew Tapley PLS Board of Directors Representative  
Sherry Toutges PLS State TrigStar Coordinator  
Carl C.de Baca PLS Editor Focal Point

## HOW TO BECOME A CORPORATE SPONSOR

If you would like to sponsor a speaker dinner, the fee is \$35 and that comes with 2 months of Business Card placement.

If you would like to sponsor a student dinner, the fee is \$25 and that comes with 1 month of Business Card placement.

The Focal Point is offering advertisements to our business partners, suppliers and other supporters with the proceeds going to our education fund.

- Business Card \$100/year
- 1/4 page ad \$250/year
- 1/2 page ad \$325/year
- Full page ad \$400/year

You can post job ads in the Focal Point for \$100 and they will run for a maximum of 1 year. And, you can take home one of our attractive slate CLSA coasters for a \$10 donation!

Contact the Focal Point editor at [focalpointeditor@gmail.com](mailto:focalpointeditor@gmail.com)

## CLSA SACRAMENTO CHAPTER CORPORATE SPONSORS



**R.E.Y. ENGINEERS, INC.**  
CIVIL ENGINEERING | LAND SURVEYING | REMOTE SENSING

Carl C. de Baca, PLS  
Principal Land Surveyor

905 Sutter Street, Suite 200, Folsom, CA 95630  
O: (916) 366 3040 D: (916) 850 8812 C: (775) 397 1553  
[cdebaca@reyengineers.com](mailto:cdebaca@reyengineers.com)



**Daniel Speziale**  
Sales Associate- Northern California

Leica Geosystems Inc.  
Part of Hexagon

[Daniel.speziale@leica-geosystems.com](mailto:Daniel.speziale@leica-geosystems.com)  
[www.leica-geosystems.com](http://www.leica-geosystems.com)  
**+1-831-287-4933**



Clear, Concise, Consistent

Cameron G. Clark, PLS  
[CClark@BroAndAssociates.com](mailto:CClark@BroAndAssociates.com)  
[BroAndAssociates.com](http://BroAndAssociates.com)  
916-996-0207

**Bro & Associates**  
Planning, Surveying & Design Services  
9922 Palm Grove Drive, Sacramento, CA 95827



**mortonpitalo**

**MICHAEL CHIARA, PLS**  
Survey Manager

600 Coolidge Drive, Suite 140  
Folsom, CA 95630

Phone (916) 927-2400 ext. 139  
Direct (916) 496-8758  
Fax (916) 357-7888  
[mchiara@mpengr.com](mailto:mchiara@mpengr.com)

[mpengr.com](http://mpengr.com)

CA CBE No. 1790922

**Your card here**



**R.E.Y. ENGINEERS, INC.**  
CIVIL ENGINEERING | LAND SURVEYING | REMOTE SENSING

Dan Beever, PLS  
Associate Land Surveyor

905 Sutter Street, Suite 200, Folsom, CA 95630  
O: (916) 366 3040 x159  
[dbeever@reyengineers.com](mailto:dbeever@reyengineers.com)

## Editor's Message

*This is my last hurrah as editor of the Focal Point. One full year has gone by and it's time for a new editor to keep the newsletter fresh and relevant. I have abused the bully pulpit as all editors should, and I have enjoyed the privilege of keeping up with local surveying activities, but now it's on to something else. I'm sure that more than a few of you think I'm leaving so as to finish the manifesto that I'm most likely planning on sending to the authorities, but that not it. (Did that years ago – they weren't interested... or concerned.)*

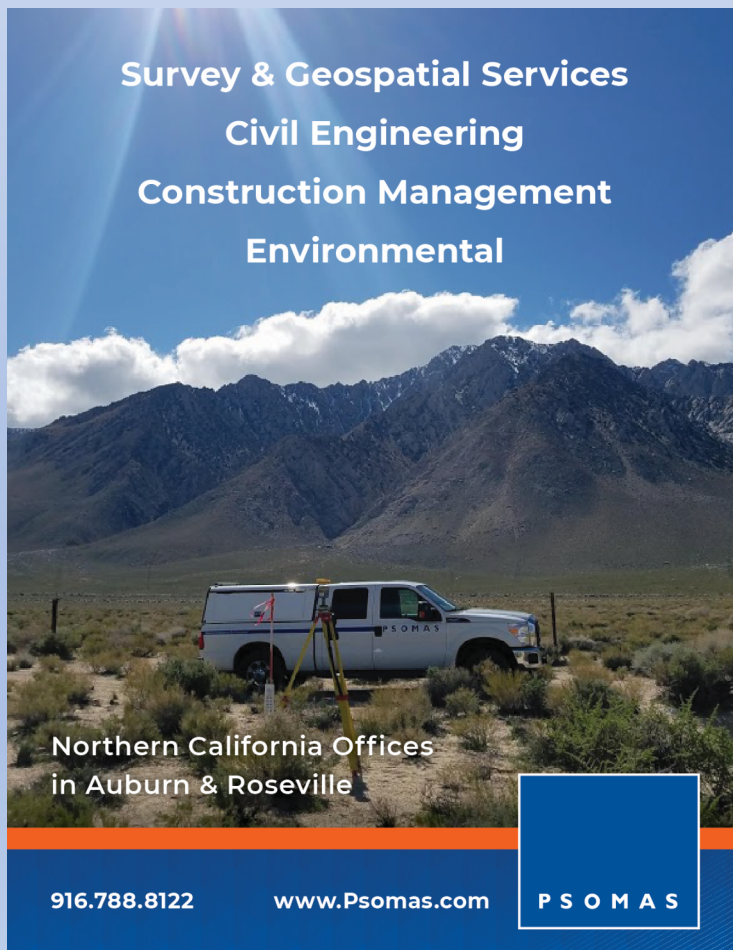
*Ove the past year I have banged on about several different issues affecting Land Surveying and I could have kept going for another fifty or so snarky editorials because one thing is for sure – there is no shortage of issues threatening our profession. I had hoped (and still do) to inspire others of you to work out a rant of your own. I reserve the right to contribute a rant here and there, but it is my sincere desire that when I submit a rant to be published, I'll be at the back of a long line.*

*So my final message to you readers is pretty simple. Stand up for Surveying. Support CLSA and your local chapter. Attend chapter meetings, write an editorial, join a committee, find a way to help with outreach. Support Survey Education. If you don't do it, who will?*

*So long amigos!*

-ED.

*PS – there's a guest rant this month authored by an anonymous contributor – enjoy!*



**Survey & Geospatial Services**  
**Civil Engineering**  
**Construction Management**  
**Environmental**

Northern California Offices  
in Auburn & Roseville

916.788.8122      www.Psomas.com      **PSOMAS**



**DH Technology, LLC.**  
Buy & Sell Used Geospatial  
& Surveying Gear

www.DhTechTools.com  
(916) 368-7069

# Sacramento Chapter, CLSA

## Minutes for meeting of January, 2024

The meeting of January 11, 2024 was held at Logans Roadhouse in Natomas and called to order by President Annette Hovorka.

The following were introduced during self-introductions:

Justin Lambert, Annette Hovorka, Marti Ikehara, Curt Burfied, Michael Quartaroli, Carl C. deBaca, Russ Smith, Bob Mackenzie, Adam Foster, Matt Stringer, Laird Nelson, Kris Scott, Eric Vance, Jonathan Rohrs, Sean Davis, Don Ivy, Kevin Akin, Jill Van Houten, John Wilusz, Rob McMillian, Jon Scarpa.

President Annette Hovorka reported:

1. Presented about the ExCom meeting and requested that anybody with suggestions, comments, or questions please email her at ladylandsurveyor@gmail.com
2. Kris Scott was nominated as Vice president
  - a. Motion was made, voted on, and passed.
3. Russ Smith requested recommendations for LS Review presenter “Thank you” gifts.
  - a. Also looking for somebody willing to present the Legal Descriptions class.
4. John Wilusz was given the opportunity to speak in regards to the Sacramento City College program.
  - a. Thanked the chapter for purchasing tapes for use by students in program.
  - b. Requested from the chapter that they consider the purchase of 25 copies of “Chaining the Land” for approx. \$535. 15 to be used for the program and 10 to be used for Chapter appreciation gifts for LS Review instructors.
    - i. Motion was made, voted on, and passed.
  - c. Also requested from the industry:
    - i. Donations of Trimble S6 Total Station batteries. Can be used.
    - ii. Spare batteries for Topcon GTS Total Stations. Would prefer that those were new.
    - iii. 2 to 3 optical levels.
    - iv. Volunteer guest speakers to present to students.
      1. 6 or so slides about a current project that you are working on using modern technology.
    - v. Volunteering during Saturday labs is also needed.
    - vi. Consider hiring students as intern.
5. As a result of Carl’s presentation, Carl made a motion to create a committee to come up with language to allow for the presentation of ideas to State that there be the creation of a national resolution for monument preservation to NSPS.
  - a. Motion was made, voted on, and passed.

*Continued on page 5*



**Morrow**  
**Surveying, Inc.**  
LAND SURVEYORS

## **Minutes for meeting of June 1, 2023 (continued)**

6. Floor was opened to Jon Scarpa
  - a. Jon mentioned that Sacramento County does not have a monument preservation fund so Jon has requested that the chapter draft a letter to request that the Board of Supervisors create this fund.
    - i. It was decided to further that discussion in the newly created committee.

### Vice President report:

1. No report provided.

### Secretary's report:

1. No report provided.

### Treasurer Adam Foster (Past) report:

1. Gave a detailed report with treasury totals of \$6,358 which includes checking and cash combined.
  - a. Upcoming charges coming up of mailbox, website domain, and now the purchase of Chaining the Land.
  - b. Approx. \$2,250 coming in currently from LS Review class.

### Director's report

1. Annette gave report of budget, monument preservation pamphlets, and B&P Code 8765, 8766, and 8766.5.
2. February's meeting will be changing of officers.

### Newsletter editor Carl C. de Baca reported:

1. Newsletter needs articles.
2. Announced that after February, he will be stepping down.
  - a. Looking for a new editor willing to step up.

### Scholarship Committee

1. Carl presented that he reviewed the candidates, was disappointed in some of the instructors reference letters.
2. The chapter awarded 7 scholarships

### 50/50 Raffle

1. Total raffle pot is \$607 (\$303.50 take home for winner) with 44 cards left.
  - a. Don Ivy drew the King of Hearts
  - b. Curt Burfield drew the Queen of Diamonds

Michael Quartaroli and Carl C. deBaca spoke on Monument Recovery and Preservation after disaster recovery and then opened up the floor to further discussion.

Meeting was adjourned by President Annette Hovorka.

## LOVE WHAT YOU DO

Annette Hovorka PLS

I find it amazing how compelling the surveying profession is. The community of surveyors, no matter what stage of their career they are at, are likely to remark how much enjoyment they derive from the work.

We find this first in how many of us came to the profession. Having a small taste, from a first surveying class in college or a happenstance that led you out on a field crew for a day, many are hooked. Whole planned careers and educational pursuits are uprooted by the experience. Others are hooked by early childhood experiences with relatives.

No matter how you found your way here, that love can hang with you even beyond an age when most would have retired. I, much to my surprise, find myself in that position and I am still enjoying the experiences I have.

All that you probably already knew, so why mention it? I am a firm believer that when you are given something, something is required of you in return. As a profession, we are very good at sharing love with others. We share by mentoring, teaching, and participating in our association activities.

My challenge for you this month is share the love by attending our monthly meeting, writing an article for the Focal Point, or putting together a presentation on a project that you can share with group at one of our monthly meetings. I am sure that our new VP would be happy to arrange a time for you to talk.

I appreciate each and every one of you! Your active participation and dedication to our craft is the key to making each of our experiences that much better!



**GEO**  
**MAPS**

PHOTOGRAMMETRIC MAPPING  
ORTHOPHOTOGRAPHY VOLUME SERVICES

Accuracy & Value For Every Project

[www.GeoMapsInc.com](http://www.GeoMapsInc.com)

GeoMaps, Inc 916.361.9133 ph  
3362 Mather Field Rd 916.361.9517 fax  
Rancho Cordova, CA 95670 [geomaps@geomapsinc.com](mailto:geomaps@geomapsinc.com)

**The Sacramento  
Chapter of CLSA  
thanks our  
sustaining members**

- **Geomaps, LLC**
- **Cooper Aerial**

# The Rant Zone

## Submittal Reviews

By S.N. Founde

I fully expect this to ruffle feathers, so I will preface this rant by saying this is one half of the story and the point of view from a private surveyor. I look forward to hearing the other side of the coin. Why is the information on the map not sufficient to explain the survey? Not all surveys need an additional sheet with a narrative that would make Tolstoy proud. “I held this monument” for a monument shown graphically to be at the corner isn’t necessary. In most cases, Record vs Measured and shown monuments held vs rejected should be sufficient in most cases to illustrate what was done, to tell the story. Are agency surveyors superior to private surveyors? Many review comments suggest they feel that way taking every opportunity to “enlighten” or “educate” those less learned or even worse, following a checklist with no understanding of what checking some of those boxes represents. I recently received an email from a reviewer explaining that it is best practice to hold monuments, on a survey showing all found monuments as held. Then there are the Professional Practices Committees. These are focused solely on reviewing requests from county surveyors. Why is there no one reviewing reviews from the agencies? Are agency reviews akin to GLO monuments, without error? Nitpick survey reviews add to cost and aversion to submittal/recording of surveys and an avoidance of interaction and submittal wherever possible. How do we determine who is qualified to review plats, legal descriptions, boundary determinations and drafting choices? I have been told to remove “Legal” from “Legal Description”, I can’t even recall the reason. The “absolutely no blank area policy” of many agencies – regardless of the amount of information provided, one more piece of redundant, unnecessary, or excessively wordy text or dimension is needed. The full legal description of a parcel isn’t necessary in the title to understand what is being surveyed, the ROW dimension isn’t necessary every 100’, and I am very reluctant to include information I haven’t verified and isn’t relevant to the survey, map, or plat. How many “interpretations” of the same language can there be? At least two for every county it would seem. Not every sentence of the code has a secret meaning which involves going back through every iteration of the code to 1890 to understand the real “intent”. Who has the authority to decide what the intent was? I was under the impression that it was the courts or BPELSG for this type of thing but have learned it’s whoever happens to be reviewing the document that day and has the authority to hold up your project indefinitely. The review process has become death by a thousand cuts. Where does technical review end and responsible charge begin? Even if I disagree strongly with a comment, most of the time this leads to an additional review cycle or some other type of lengthy back and forth that I don’t have time for. Not every job do I budget 3 days of comment review/discussion but perhaps I should. So there it is, now let’s here from the other side of the road about all those Pre-82’s and duals that led to this level of scrutiny.

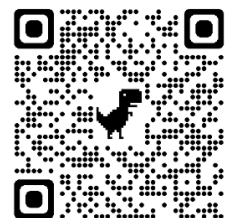
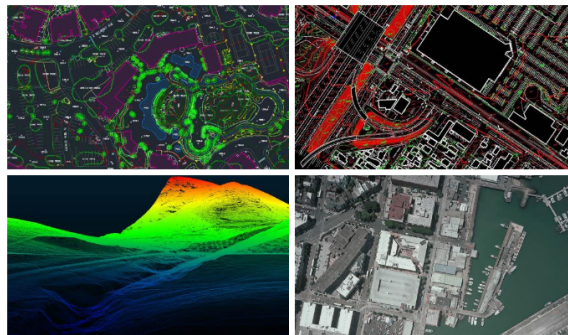
# VERTICAL MAPPING RESOURCES

a leading aerial mapping and geospatial services company

## SERVICES INCLUDE

- Photogrammetry
- Airborne LiDAR
- Mobile LiDAR post processing
- Drone data post processing
- Orthophotography

email us: [info@verticalmapping.com](mailto:info@verticalmapping.com)



[www.verticalmapping.com](http://www.verticalmapping.com)  
(775) 737-4343



# Be More Productive, Competitive, Profitable

CSDS offers the most trusted names in surveying, geospatial, 3D scanning and printing products, services, and supplies.

Our services include:

- ✓ Real-Time GNSS Network Services
- ✓ Printer Placements
- ✓ Equipment Rentals
- ✓ Technical Support and Training
- ✓ Workflow Optimization
- ✓ Professional Services



**CALIFORNIA SURVEYING & DRAFTING SUPPLY**



**We lead with service and deliver precision. Scan here to learn more.**



SACRAMENTO | DUBLIN | FRESNO | ANAHEIM | ESCONDIDO | VENTURA

solutions@cadsinc.com | 800.243.1414 | cadsinc.com